

Customer Name | Customer P/N | General Specifications

2.85  $\mu$ F

GMV

300VDC/125VAC@125°C

0.3

50 VC-100MOHM

0.76 OHM

2.5%@1KHz&0.1-1Vrms@25°C

-55 °C TO + 125 °C

Provided

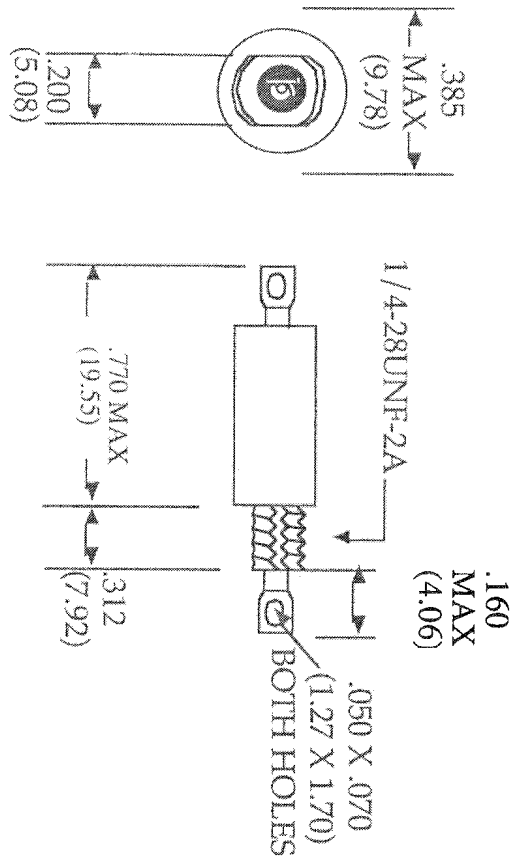
Part Number & Date Code

Brass Tin Plated

CASE

ESTIMATED INSERTION LOSS

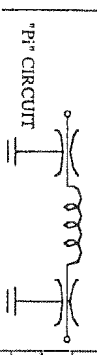
14 KHZ	4 DB
30 KHZ	29 DB
50 KHZ	35 DB
	DB
150 KHZ	70 DB
300 KHZ	80 DB
	DB
1 MHZ	80 DB
10 MHZ	80 DB
100 MHZ	80 DB
1 GHZ	80 DB
	DB



Note 1:  
Note 2:  
Note 3:

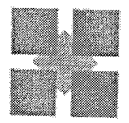
All Dimensions in Inches(mm) Testing: per MIL-STD-202

Circuit Type:



Part Number: FT-INS100204

By:	GM	Date:	November 20, 2007
Revisions:	1	2	3
Date:			4
By:			



א.ג.ר. אימוניטת רדיו  
RF Immunity Ltd.